

Arts/Sci 2R06 Assignment 1/Solution

1.2 a) Quantitative b) Quantitative c) Qualitative d) Quantitative

1.4 a) Discrete b) Continuous c) Discrete d) Discrete e) Continuous

1.18 a) Roughly Bell-shaped curve , with the majority of the data in the centre.

b) Stem-and-leaf of 1.18 $N = 50$

Leaf Unit = 0.10

```

2   1  68
4   2  12
12  2  55578899
15  3  114
(13) 3  5566677778999
22  4  00012234
14  4  5678999
7   5  11
5   5  667
2   6  12
    
```

The smallest observation=1.6

c) The eighth and ninth observations are both 4.9

1.28 a) Stem-and-leaf of 1.28 $N = 50$

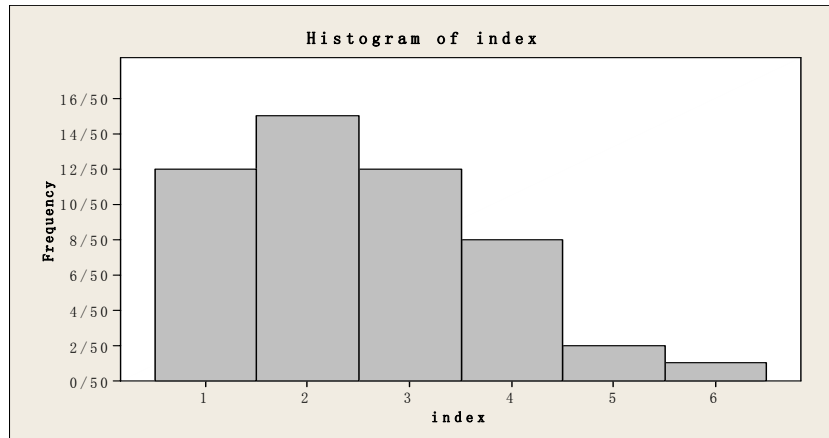
Leaf Unit = 1.0

```

5   3  00011
10  3  22233
15  3  44555
22  3  6666677
(5) 3  88999
23  4  00001111
15  4  2233
11  4  55
9   4  6667
5   4  88
3   5  00
1   5
1   5  5
    
```

b)

index	range	freq
1	30-35	12
2	35-40	15
3	40-45	12
4	45-50	8
5	50-55	2
6	55-60	1



c) There are not any significant differences. Both graphs are left-skewed.

d) $27/50 = 54\%$

e) $47/50 = 94\%$

1.63 a) Stem-and-leaf of 1.63 $N = 51$

Leaf Unit = 1.0

1 0 7

2 0 8

3 1 0

4 1 3

6 1 45

12 1 666777

20 1 88888999

(12) 2 000000011111

19 2 22222333

11 2 4444555

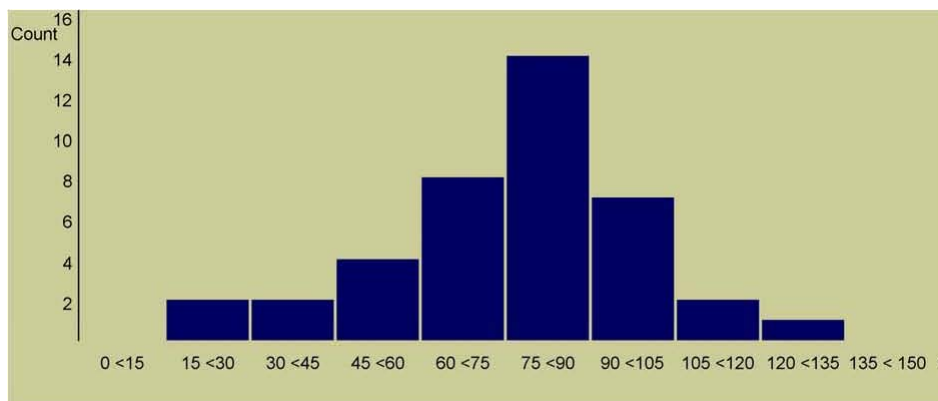
4 2 677

1 2 9

b) The shape of this distribution is skewed to the left, there is one peak between 20 and 21 cents.

c) Yes, there are several states with both unusually high and low gasoline taxes. Georgia has an unusually low tax=7.5 cents, as well as Alaska=8.0 cents. While Rhode Island has a very high tax=29 cents.

1.72



The shape of the graph is a curve skewed to the left.